



Microsoft Exchange 2003 Configuration Guide

Mail Prove RBL Service

Version: 1.0

Prepared by:

Mail Proved Limited

February 11, 2004

Mail Prove Limited

Unit 806, Cyberport 1
100 Cyberport Road
Pokfulam, Hong Kong

郵盾亞洲有限公司

香港薄扶林
數碼港道100號
數碼港1座806室

Tel 電話 (852) 3105 2920

Fax 傳真 (852) 3105 2926

Email 電郵 info@MailProve.com

www.MailProve.com



Revision History

| Date | Version | Description | Made by |
|--------------|---------|-------------------------|---------|
| Feb 11, 2004 | 1.0 | First version of report | Seve Ho |

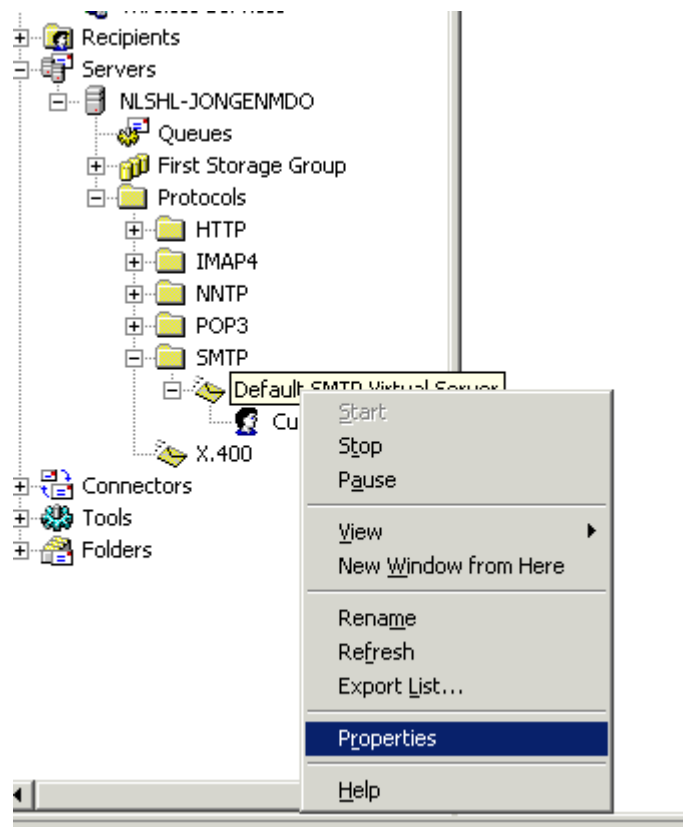
Introduction

This configuration guide provides guidelines to configure Microsoft Exchange 2003 to use Mail Prove Service.

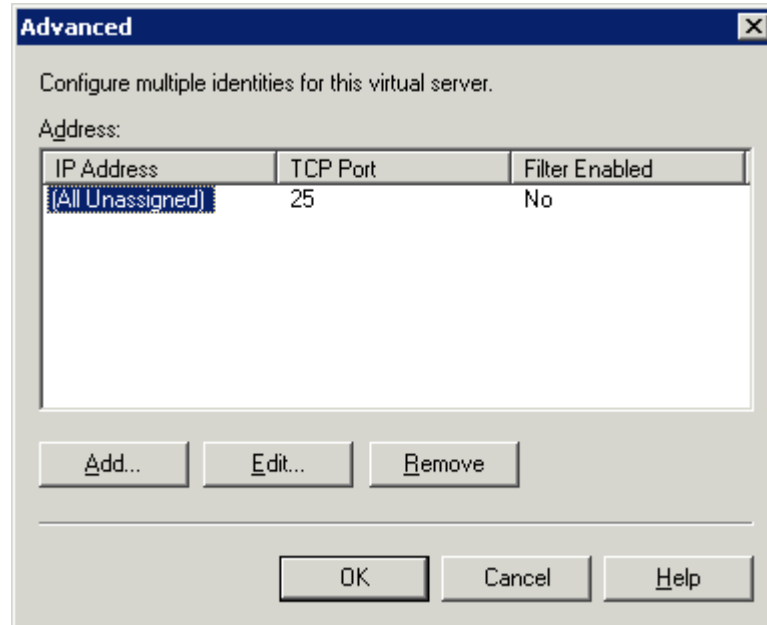
Microsoft Exchange 2003 Configuration Guide

1. Enable Connection Filtering on specific SMTP virtual server IP.

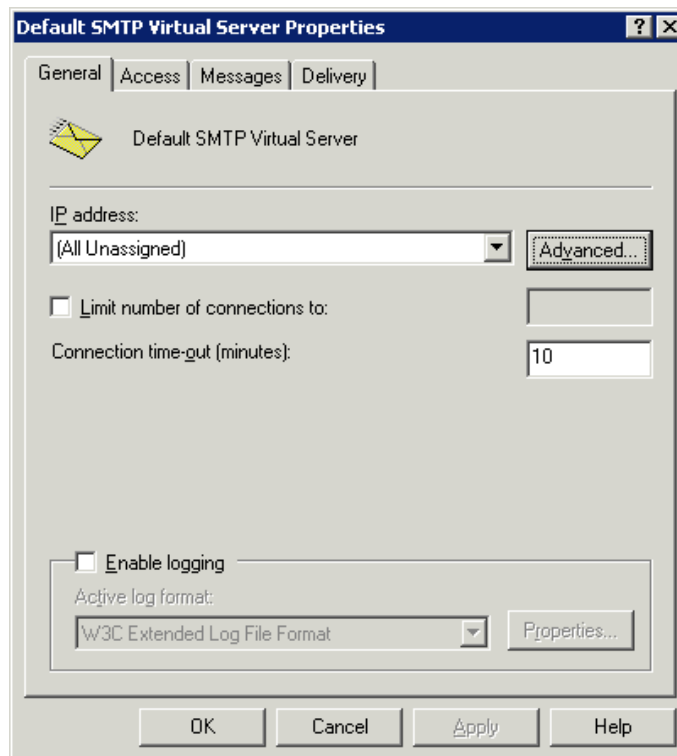
1.1 Go to the properties of SMTP Virtual Server.



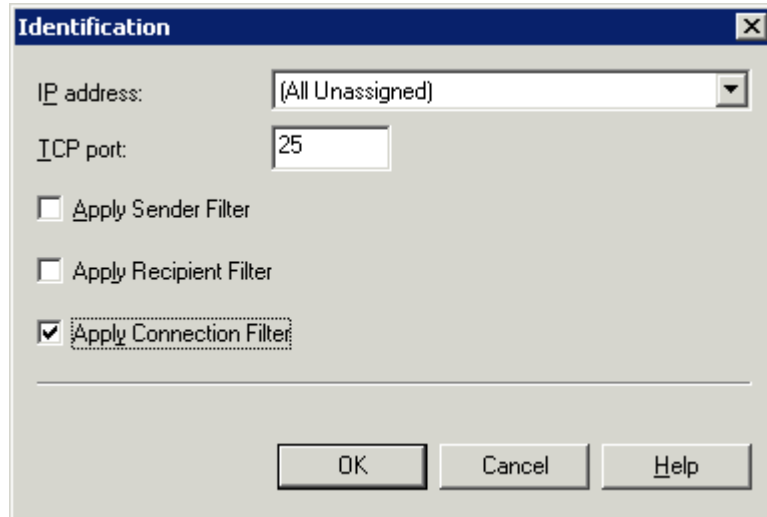
1.2 On the General tab, click the Advanced Button.



1.3 Click the Edit button

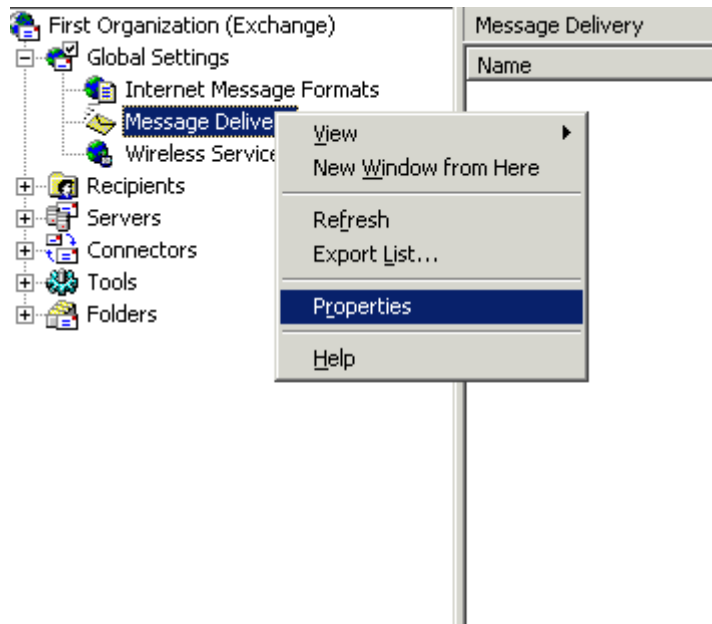


1.4 Check the 'Apply Connection Filter' checkbox

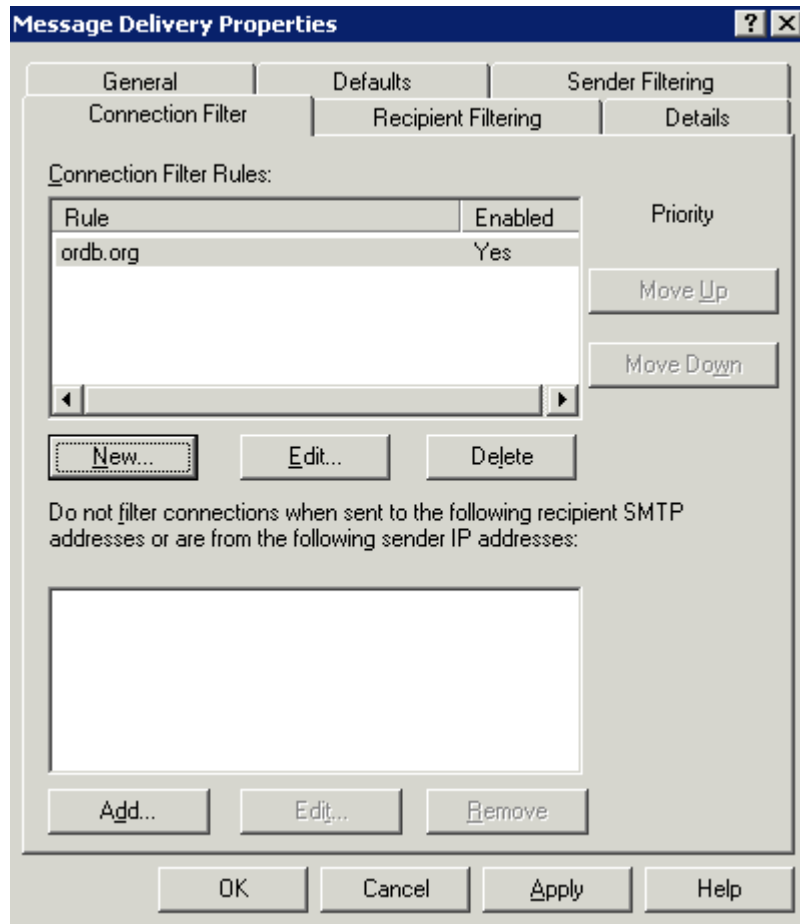


2. Create New Connection Filter Rules for Mail Prove RBL query.

2.1 Go to the properties of the Message Delivery settings.



2.2 On the tab of “Connection Filter”, click new to add a new connection filter rule.



2.3 Input the display name (e.g. mailprove_rbl), DNS Suffix of Provider(given by the reseller.) Moreover, user can overwrite the error message returned when the incoming mail rejected by RBL.



Connection Filtering Rule

Display Name
ordb.org

DNS Suffix of Provider
relays.ordb.org

Custom Error Message to Return
(default error message will be used if left blank):
[Empty text box]

Return Status Code from Provider Service:
Configure the return status code received from the provider service to provide a match for this connection filter rule. If you choose not to configure this by default the "match filter rule to any return code" option will be used.

Return Status Code...

Disable this rule

OK Cancel Help

2.4 Click "OK" to finish the configuration.